



SULAWESI, MOROTAI & HALMAHERA TOUR REPORT 2024

10 September - 6 October 2024

BY CRAIG ROBSON

The number of bird species in these far-flung Asian islands continues to increase exponentially and, during our latest epic journey through the region, we were able to amass a record total of 325; around 145 of which are endemic. Some of the more memorable highlights during this unique tour were: Maleo, Moluccan Megapode, Moluccan Drongo-Cuckoo, the rare Sulawesi Cuckoo, Carunculated Fruit Dove, Grey-headed Imperial Pigeon, Moluccan Woodcock, 10 species of owl, Sulawesi Nightjar, Moluccan Owlet-Nightjar, Azure Dollarbird, 16 species of kingfisher, Purple-bearded Bee-eater, 16 parrots, Sulawesi, North Moluccan and Ivory-breasted Pittas, Moluccan, Red-tinged and Obi Myzomelas, Morotai Friarbird, Obi and North Moluccan Cicadabirds, Maroon-backed and Cinnamon-breasted Whistlers, 6 drongos, Piping Crow, all three Paradise-crows, lekking Standardwings, both 'species' of *Hylocitrea*, Halmahera and Obi Golden Bulbuls, Lompobattang and Halmahera (Island) Leaf Warblers, all three subspecies of *Malia*, Morotai, Halmahera, 'Bacan' and 'Obi' White-eyes, Sulawesi, White-necked and Fiery-browed Mynas, Grosbeak Starling, Red-backed and Sulawesi Thrushes, *Geomalia*, Matinan and Lompobattang Flycatchers, and Great Shortwing.

There were also some good mammal highlights: Sulawesi Bear, Obi and Small Sulawesi Cuscuses, Risso's and Spinner Dolphins, Gursky's Tarsier, Moor and Crested Macaques, and Whitish and Celebes Dwarf Squirrels. We also enjoyed a wide range of other wildlife, including almost 70 species butterfly, and some truly mind-blowing moths that were attracted to lights at Lore Lindu NP.

As usual, the tour began at Makassar Airport in south-west Sulawesi, and we were soon on our way to the small town of Malino, overlooking the isolated Lompobattang Range. This year, we had an afternoon and a morning to explore this well-known centre of endemism, via two trails at markedly different elevations. Starting on our first afternoon at around 1000-1100m, we focussed on our main target-bird, the diminutive and little-known Lompobattang Flycatcher. We had a new trail to check-out and, in no time at all, we had the flycatcher fixed in our binoculars. The range-restricted Black-ringed White-eye was also seen well, we had our first Sulawesi Cicadabirds, and a pair of Asian Woolly-necked Storks were unexpected.

First thing the following morning, we were ascending a completely different trail to the east of the massif, that took us from c.1700 to over 2000m. The main highlight here was 'Southern' *Hylocitrea*, a morphologically distinct form of this famous Sulawesi endemic, and a very likely future split. Lompobattang Leaf Warbler was quite common, and we also

enjoyed isolated local forms of Dark-eared Myza, Sulawesi Myzomela, Sulawesi Fantail, Mountain Tailorbird and Malia. Golden-mantled Racket-tail, Sulawesi Drongo, Sulphur-vented Whistler, Sulawesi Thrush, Sulawesi Bush Warbler, Streak-headed White-eye, and Grey-sided Flowerpecker also showed. A troupe of Moor Macaques was a surprise.

After eating lunch in Malino, we headed back to Makassar, arriving at the coastal fish ponds with enough time for some evening birding. A very productive spell brought us several Javan Plovers, as well as Wandering Whistling Duck, Sunda Teal, Pied Stilt, Terek Sandpiper, Grey-tailed Tattler, Long-toed and Red-necked Stints, large numbers of Little Black Cormorants, Nankeen Night Herons (amongst the more numerous Black-crowned's), White-shouldered Triller, Australian Reed Warbler, and Lemon-bellied White-eye.

Early on the following morning we drove out of town to the nearby limestone hills of Karaenta Forest. First things first, we headed straight into a patch of forest in search of Black-headed Kingfisher (a split from Green-backed), and were soon enjoying point-blank views of a rather tame male. A field-breakfast followed, before we headed off to a trail in search of other goodies. Major roadworks and traffic made birding along the main road all but impossible, and the trail was quiet too. The few highlights consisted of our first White-faced Cuckoo-Doves, Sulawesi Serpent Eagle, and Sulawesi Hornbill. A half-hour visit to Bantimurung was proving fruitless, until a smart Sulawesi Goshawk was spotted.

After returning to Makassar for lunch, it was time to take a domestic flight to Palu in north-central Sulawesi, where the local crew met us on arrival with their vehicles, and transported us to our accommodation at Wuasa, close to Lore Lindu National Park. Our flight had been significantly delayed, so we arrived late in the evening.

Our comfortable guest house was within easy reach of the cool montane forests, and we had two and a half days to explore this world-renowned birding hotspot. Our first day was spent in the Lake Taming area, and along the main road through the upper-level forests, then down towards the cultivated valleys. Our second day was spent along the Anaso Track, starting predawn. Our local guides managed to find us a tame juvenile Geomalina close to Lake Taming this year, and it gave astonishingly close views. A massive bonus. Breakfast at dawn at the car park gave us easy looks at our first string of endemics, with the likes of 'Sulawesi' Sultan's Cuckoo-Doves, Ornate and Yellow-cheeked Lorikeets, and Ivory-backed Woodswallows. We were all amazed by the wonderful selection of fantastic moths that had been attracted to the lights at the park buildings overnight, including enormous Sulawesi Atlas and Sulawesi Moon Moths. Along the main road towards the Anaso Track, we found groups of vocal Malias, had our first looks at Sulawesi Bush Warbler, and tempted in a sultry male Great Shortwing onto a mossy log. During predawn along the Anaso track we spotted a sneaky Cinnabar Boobook, before a Minahasa Masked Owl called at close range. Hidden from sight, it unfortunately moved-on too quickly. We had better luck with Lore Lindu Kingfisher (the local form of Scaly-breasted), just as it was getting light. Continuing onwards and up to the highest levels, our guide Idris found us a roosting Satanic Nightjar, lovely as ever, before we continued to the best areas for 'Northern' Hylocitrea (a remarkable 12 noted this year), and the often somewhat elusive White-eared Myza. Mountain Serins were heard a number of times, and sighted as they flew over. Returning to lower levels after an excellent field lunch, we lucked-in with a pair of lovely Purple-bearded Bee-eaters, which had apparently been tricky of late. Red-eared Fruit Dove, Sulawesi Hawk-Eagle, Dark-eared Myza, Pygmy Cuckooshrike, Maroon-backed Whistler, Sulawesi Leaf Warbler, Chestnut-backed Bush Warbler, Malia, Streak-headed White-eye, Fiery-browed Starling, and a co-operative Sulawesi Thrush were amongst the other highlights.

A late afternoon/early evening excursion to the fields at Wanga produced a hunting Eastern Grass Owl and, on the way back to the guest house, Idris and the drivers helped us find a Speckled Boobook and a Sulawesi Masked Owl.

On our final morning, we visited a different area of the national park – Gunung Lopong. Dawn roadside birding was really good here and, apart from the hoped for Piping Crow (four vocal birds showing brilliantly), we were also extremely fortunate to be able to scope-up a calling Sulawesi Cuckoo – one of the most difficult endemics to find on the regular tour routes. Other great birds included Moluccan Drongo-Cuckoo (heard-only here), Barred (or Sulawesi) Honey Buzzard, Sulawesi Pygmy Woodpecker, Cerulean Cuckooshrike, Sulawesi Golden Oriole (a potential split from Black-naped), Sulawesi Blue Flycatcher, and Crimson-crowned Flowerpecker.

Travelling back to Palu for our return flight to Makassar, we paused for a look at the 'munia fields', where we were rewarded with hundreds of Pale-headed's, as well as a few Black-faced. A Great Painted-snipe was an unexpected bonus. Closer to town the buttonquail patch was still heavily overgrown since its Covid-induced neglect, and we only managed flight views of a single Red-backed.

From Palu, we flew to Manado, and then headed west into the northern arm of Sulawesi, and the regional city of Kotamobagu – arriving late in the evening due to flight delays. Our first morning was spent along the Molibagu Road. Birding at different elevations, we found showy Bay Coucals, White-faced Cuckoo-Dove, Oberholser's Fruit Dove, lots of Knobbed Hornbills, Sulawesi Hornbill, sneaky Spot-tailed Sparrowhawks, a small group of Pygmy Hanging Parrots, our first Sulawesi Crows, more Ivory-backed Woodswallows, White-rumped (or Sulawesi) Triller, and 'Sulawesi' Crimson Sunbird.

After lunch we visited Tambun, in search of the amazing Maleo. The reserve warden, Max, showed us around and appraised us of recent developments at the site, all of which appear to be reaping rewards, with record numbers of chicks being produced. Adult Maleos were a no-show however, so we returned early the following morning and Max led us to his newly constructed hide on the breeding grounds. Before too long a pair of Maleos quietly stepped forth from the forest, in search of a likely spot to lay an egg. Other good birds at Tambun were Yellow-billed Malkoha, Black-naped Fruit Dove, our

first Sulawesi Lilac Kingfisher, Black-billed Koel, perched Sulawesi Serpent Eagle, obliging Ashy Woodpeckers and Pale Blue Monarchs, and lots of 'Northern' White-necked Myna.

At Toraut, we visited a viewpoint and scanned the forest edge. Distant views of a variety of pigeons and parrots were all improved-on at a later date. Our second Sulawesi Lilac Kingfisher popped-up.

The following morning, we were off again in the dark, this time to Gunung Ambang. First via a series of small roads to a village where we met our guide, and then on foot through fields and up along a narrow trail and into mossy forest. At a level spot in the forest we paused to eat breakfast, and soon afterwards located our main target bird, the rather demure but range-restricted endemic Matinan Flycatcher. Rather confiding, it gave great views. We could hear the distant deep reverberating call of Sombre Pigeon, but unfortunately our attempts to track it down this year failed once more. The best of the rest at Ambang included the likes of Sulawesi Fantail, Sulawesi Leaf Warbler, Malia, and Streak-headed White-eye. King Quail, Gould's (Little) Bronze Cuckoo, and Isabelline Bush-hen put in appearances down in the fields.

Leaving the Kotamobagu region behind, we drove to our hotel in Tomohon, in the hilly outskirts of Manado. Predawn the following morning saw us on our way to Gunung Mahawu, in search of Sulawesi Pitta. Our guide, Abdi, led us to a well-concealed hide where, after a patient wait, we were treated to gob-smacking close views of this endemic stunner. Next up was a tame male Regal Kingfisher (the local form of Scaly-breasted), that also performed admirably.

After a proper breakfast at our hotel, we continued by road to World famous Tangkoko National Park, our final destination on Sulawesi. After lunch, we embarked on a coastal boat trip to some mangrove-lined channels, where soon connected with a pair of the much-wanted Great-billed Kingfisher, as well as our first White-rumped Cuckooshrike. A nesting Black Bittern was a great surprise, and we also enjoyed close views of Javan Plovers, and Grey-tailed Tattler. Floating fisherman's structures en route were providing great roosting spots for groups of smart Black-naped Terns and their recently fledged young, and there were also plenty of Lesser Frigatebirds, and a small number of Red-necked Phalaropes. Back on land we drove up to higher levels where, at dusk, with the aid of local guide Mensur and his assistant, we succeeded in getting great views of Sulawesi Nightjar and Sulawesi Scops Owl.

The whole of the next day was spent exploring a network tracks and trails through the forest with our experienced guides. We successfully located some of Sulawesi's most iconic birds: several Purple-winged Rollers, day-roosting Ochre-bellied Boobooks with their dozy offspring, very tame Green-backed Kingfishers, multiple Sulawesi Mynas, and two beautiful Red-backed Thrushes. Other goodies included several Philippine Megapodes, Isabelline Bush-hens right out in the open, Yellow-breasted Racket-tail, and Blue-backed Parrot, not to mention Sulawesi Bear Cuscus, the endangered Crested Macaque, and the incredible Gursky's Tarsier!

Our second early morning at Tangkoko started at an excellent viewpoint. There was a nice selection of birds and some prime targets, including our only Grey-headed Imperial Pigeon of the tour (though quite brief), teed-up White-bellied Imperial Pigeons, 'Paulina's' Green and Silver-tipped Imperial Pigeons, Grey-cheeked Green Pigeons, Knobbed and Sulawesi Hornbills, a flyby Pygmy Hanging Parrot, several Pied Cuckooshrikes in the scope, yet more Sulawesi Mynas, and our best views of Grosbeak Starlings. Back towards our guest house, Mensur found us a superb little Sulawesi Dwarf Kingfisher, and then a nice Ruddy Kingfisher, that we admired through the scope.

We headed back towards Manado and overnights at Luley Resort. There are usually a few good birds to be found at this coastal location, and this year we had further looks at both Great-billed Kingfisher and White-rumped Cuckooshrike.

Following a flight cancellation, we began our exploration of the North Moluccas with a flight to Ternate, before crossing by speedboat to Sidangoli, driving north to Tobelo, and crossing by speedboat once more to Morotai. Situated just to the north of Halmahera, this largish island has an interesting selection of accepted and proposed endemics. Based at a comfortable hotel, we made late afternoon and early morning trips towards the virtually un-birded forested interior of the island. The two currently accepted endemics, Dusky (or Morotai) Friarbird and Morotai White-eye were easily located and seen well, and we also found several potential future splits, including the local forms of Common Paradise Kingfisher, Halmahera Paradise-crow, and Spangled Drongo. Our attempts to see the endemic form of Ivory-breasted Pitta were thwarted by logistical difficulties and overgrown tracks and trails. Other good birds included Dusky Megapode, Moustached Treeswift, Blyth's Hornbill, Oriental Hobby, Moluccan Eclectus, White-bellied Cuckooshrike, Shining Flycatcher, Long-billed Crow, Halmahera Golden Bulbul, Gray's Grasshopper Warbler, and Metallic Starling. Bulwer's Petrels were seen during the crossings.

Back on Halmahera, we checked-in to our hotel in Tobelo and, after dinner in a restaurant, we drove further north to Galela, in order to reach the beach where Moluccan Megapodes come to lay their eggs in the black volcanic sand. After locating the guide's house and negotiating a mangrove channel in small boats, we found ourselves at the site. In no time at all, a megapode was fixed in the spotlight, ready to lay an egg, and proved very tame as usual, as we made a careful approach.

The next morning, we made the long drive around to Subaim on the west coast of the north-east arm of Halmahera (the new ferry service having been temporarily suspended). Arriving at our guest house in time for lunch, we had time to begin our exploration of the nearby Buli Road in the afternoon. During our four nights based at Subaim, we spent the bulk of our time birding the aforementioned location, where a road winds up through forest of varying quality to a pass at around 500m elevation. The long list of good birds that we found here included Great Cuckoo-Dove, Spectacled and Cinnamon-

bellied Imperial Pigeons, Scarlet-breasted Fruit Dove, Goliath Coucal, Moluccan Brush and Moluccan Drongo-Cuckoos (both seen well), Pacific Baza, Gurney's Eagle, Blue-and-white Kingfisher, a pair of Oriental Hobbies, Moluccan King Parrot, White Cockatoo, Chattering and Violet-necked Lories, a very showy Ivory-breasted Pitta, White-streaked Friarbird, White-naped (or Halmahera Pied) Monarch, Dusky-brown Oriole, 'Halmahera' Spangled Drongo, Black-chinned Whistler, North Moluccan Cicadabird, Halmahera Cuckooshrike, Halmahera (or Cream-throated) White-eye, 'Halmahera' (Island) Leaf Warbler, Moluccan Starling, and Halmahera Flowerpecker. After a long search, and right at the last minute, a pair of excellent Azure Dollarbirds were spotted and studied through the scope.

On one morning, we set off very early and drove north to Foli, where we were guided to a lek site of the islands most famous bird, Standardwing (or Wallace's Standardwing). This well-endowed bird-of-paradise did not disappoint, giving us a great show, as the morning light slowly filtered through the trees. The remainder of the morning along the old logging road was also very pleasant, with Dusky Megapode, Common Paradise Kingfisher, Moluccan Myzomela, 'Halmahera' (Moluccan) Monarch, Moluccan Flycatcher, and Drab Whistler.

After nightfall we tracked down a superb Moluccan Owlet-Nightjar, that posed long enough for everyone to get good views, and we also spotted a couple of Moluccan Scops Owls. Unfortunately, the same could not be said of Halmahera Boobook, which gave us a terrible run-around and never showed properly.

An early morning drive south, took us to a protected area with hides, where the local guides facilitated great looks at North Moluccan Pitta and Moluccan Dwarf Kingfisher; while the coast nearby held a nice Beach Kingfisher. In the evening, nearby Gunung Ronny produced Pacific Baza, Great-billed Parrot, Moluccan Cuckooshrike and, finally, perched Moluccan Hanging Parrots.

After our last bit of birding on Halmahera, we drove south-west to Sofifi (south of Sidangoli), and made the relatively short speedboat journey to Ternate, where we spent the last night of the main tour at a modern hotel.

The following morning, we said goodbye to those that were leaving us and, after lunch, we began the post-tour extension with a visit to the tourist hotspot of Danau Tolire, a remarkable deep crater lake surrounded by forest. There are no real stand-out specialities on Ternate but our pleasant selection of birds included lots of Lesser Frigatebirds, a pair of White Cockatoos, Blue-capped Fruit Dove, Shining Flycatcher, and a Blue Rock Thrush by the beach (quite rare this far east).

In the evening, after dinner at a restaurant in town, we boarded the Obi ferry and settled-in to our cabins for the night. At dawn the following morning, we awoke to a view of the south-west coast of Bacan and before long, we docked at Kupal. With an hour and a half to spare, we disembarked and quickly headed for the nearest likely birdy area. Our brief spell on the island brought great views of the local form of Common Paradise Kingfisher, while some Pale-vented Bush-hens managed to escape unseen.

Soon we were back underway, with large groups of Red-necked Phalaropes alongside. As we crossed the open sea between Bacan and Bisa, we spotted Brown Booby, and Greater Crested, Bridled, and *longipennis* Common Terns, as well as some nice Risso's and Spinner Dolphins. After docking at Bisa for lunch, with Osprey and more Beach Kingfishers, we followed the north-east shore of this island, before turning south and crossing the channel to Obi, arriving mid-afternoon.

We had the best part of three days to explore this large but seldom-visited North Moluccan island, which currently has no fewer than seven recognised endemics. Probably the biggest draw on Obi is Moluccan Woodcock and, thanks to our local guide, we had great views of two roding birds on our very first evening, one of which even alighted on the thick bough of a large tree! The other six endemics: Carunculated Fruit Dove, Red-tinged Myzomela, Obi Cicadabird, Cinnamon-breasted Whistler, the abundant and easily seen Obi Paradise-crow, and Obi Golden Bulbul were all seen easily and well. One full day was spent hiking along logging roads to a maximum elevation of around 450m. Our hard work and determination, assisted by our local guide Uchi's knowledge, resulted in only our second ever sighting of Obi Myzomela, a recently discovered and undescribed species (bizarrely lumped in Bacan Myzomela by I.O.C.), and two pairs of Obi White-eyes, an undescribed and nailed-on future split from Cream-throated. The logging roads also brought us more Carunculated Fruit Doves, Sultan's Cuckoo-Dove, Spectacled Imperial Pigeon, the local form of Common Paradise Kingfisher, Blue-and-white Kingfisher, Blyth's Hornbill, the local form of Chattering Lory, White-bellied Cuckooshrike, Pale Cicadabird, Rufous-bellied Triller, 'Obi' Spangled Drongo, 'Obi' Fantail (a likely split from Northern), and 'Obi' (Moluccan) Monarch.

Our only predawn owling sortie near Laiwui brought us excellent views of the regional form of Barking Owl. The Laiwui to Lopon road was easy birding and produced Obi or Rusty Imperial Pigeon (a potential split from Cinnamon-bellied), as well Red-flanked Lorikeets, and Sacred and Beach Kingfishers. The endemic Obi Cuscus, spotlighted on one evening while woodcocking, was the primary mammal highlight.

Catching the return ferry, we docked again at Bisa before crossing once more to Kupal in south-west Bacan. There was little of note at sea, apart from a single Bulwer's Petrel. We docked quite late at the harbour, and only just had time to visit a nearby trail with some half-descent habit. A responsive Bacan White-eye, the distinct split-worthy local form of Cream-throated, was located just as the sun went down.

Much of the following day was spent exploring trails that might lead to higher elevations, the habitat of the endemic Bacan Myzomela and range restricted Giololo Fantail. Unfortunately it was not to be, and this remains a difficult island to explore fully. The local, splittable form of Spangled Drongo was seen frequently, and we also found Moustached Treeswift, Sultan's

Cuckoo-Dove, 'Eastern' Superb and Blue-capped Fruit Doves, Goliath Coucal, Blyth's Hornbill, White Cockatoo, Moluccan Eclectus, Great-billed Parrot, Red-flanked Lorikeet, Violet-necked Lory, a smart North Moluccan Pitta, Rufous-bellied Triller, Drab Whistlers (heard), 'Halmahera' Moluccan Monarch, Shining Flycatcher, Long-billed Crow, Halmahera Golden Bulbul, Gray's Grasshopper Warbler, and Metallic and Moluccan Starlings.

The extension, and indeed the tour itself, drew to a close as we took another overnight ferry back to Ternate, where we prepared for our onward international flights. It had been a long but very successful tour, with many exciting highlights to look back on.

SYSTEMATIC LIST OF SPECIES RECORDED DURING THE TOUR

Species marked with the diamond symbol (◊) are either endemic to the country or local region or considered 'special' birds for some other reason (e.g., it is only seen on one or two Birdquest tours; it is difficult to see across all or most of its range; the local form is endemic or restricted-range and may in future be treated as a full species).

The species names and taxonomy used in the bird list follows Gill, F., Donsker, D., & Rasmussen, P.(Eds). **2024. IOC World Bird List (v14.1)**.

Where the subspecies seen is/are known, these are often given in parentheses at the end of the species comment.

BIRDS

Spotted Whistling Duck *Dendrocygna guttata* Heard-only. Once at night on Obi.

Wandering Whistling Duck *D. arcuata* A few on Sulawesi. Andrew saw one with a chick at Makassar Fish Ponds.

Sunda Teal *Anas gibberifrons* Three at Makassar Fish Ponds.

Maleo *Macrocephalon maleo* Endemic. Three at Tambun. Thanks to Max for sharing his knowledge of the species.

Moluccan Megapode *Eulipoa wallacei* One was spotlighted at its breeding beach in north Halmahera.

Philippine Megapode *Megapodius cumingii* Frequent at Tangkoko, scuttling through the undergrowth.

Dusky Megapode *Megapodius freycinet* Seen on Morotai and Halmahera. Many heard.

Red Junglefowl (introduced) *Gallus gallus* Heard-only.

King Quail (Blue-breasted Q) *Excalfactoria chinensis* One seen and others heard at G. Ambang, Sulawesi.

Satanic Nightjar *Eurostopodus diabolicus* Endemic. One at its roost along the Anaso Track.

Great Eared Nightjar (Pacific E N) *Lyncornis macrotis* Small numbers on Sulawesi (*macrotis*).

Sulawesi Nightjar *Caprimulgus celebensis* Endemic. Several at Tangkoko; nice views.

Savanna Nightjar *Caprimulgus affinis*

Moluccan Owlet-nightjar *Aegotheles crinifrons* Endemic. One spotlighted along the Buli Rd.

Grey-rumped Treeswift *Hemiprocne longipennis* Frequently seen on Sulawesi (*wallacii*).

Moustached Treeswift *Hemiprocne mystacea* Small numbers, Morotai Halmahera & Bacan (*confirmata*).

Glossy Swiftlet *Collocalia esculenta* C,S (nominate) & N Sulawesi (*manadensis*); Morotai to Obi (*spilura*).

Moluccan Swiftlet (Halmahera S) *Aerodramus [infuscatus] infuscatus* A few identified at Danau Tolire, Ternate.

Moluccan Swiftlet (Sulawesi S) *Aerodramus [infuscatus] sororum* Endemic.

Moluccan Swiftlet (Seram S) *Aerodramus [infuscatus] ceramensis* 20 on Obi.

Uniform Swiftlet *Aerodramus vanikorensis* N Sulawesi (*aenigma*), Halmahera & Bacan (*waigeuensis*).

Purple Needletail *Hirundapus celebensis* Just one briefly at Wanga, a very poor year.

Asian Palm Swift *Cypsiurus balasiensis*

House Swift *Apus nipalensis* Small numbers breeding at the ferry dock, Bacan.

Bay Coucal *Centropus celebensis* Endemic. A number of nice sightings.

Goliath Coucal *Centropus goliath* Endemic. Easily seen on Halmahera.

Lesser Coucal *Centropus bengalensis*

Yellow-billed Malkoha *Rhamphococcyx calyrorhynchus* Endemic. Nominate; with *meridionalis* Lore Lindu.

Black-billed Koel *Eudynamis melanorhyncha* Endemic. Best seen at Tambun.

Little Bronze Cuckoo (Gould's B C) *Chrysococcyx [minutilus] jungei* Great views at G. Ambang.

Sulawesi Brush Cuckoo *Cacomantis virescens* Endemic. Common on Sulawesi.

Sahul Brush Cuckoo (Australian B C) *Cacomantis variolosus*

Moluccan Brush Cuckoo *Cacomantis aeruginosus* Halmahera & Obi. Two seen on the former island.

Moluccan Drongo-Cuckoo *Surniculus musschenbroeki* Heard at G. Potong, Sulawesi, then seen at Buli Rd.

Sulawesi Cuckoo *Cuculus crassirostris* Endemic. This mega was scoped at Gunung Lopong, Lore Lindu NP.

Rock Pigeon (Feral Pigeon) (introduced) *Columba livia*

Red Collared Dove (introduced) (R Turtle D) *Streptopelia tranquebarica*

Spotted Dove (introduced) *Streptopelia chinensis*

Sultan's Cuckoo-Dove *Macropygia doreya* Small numbers on Morotai, Halmahera, Obi and Bacan (*albiceps*).

Sultan's Cuckoo-Dove (Sulawesi C-D) *M. [doreya] albicapilla* Endemic. Common, particularly at Lore Lindu.

Great Cuckoo-Dove *Reinwardtoena reinwardti* One scoped at Buli Rd (nominate).

White-faced Cuckoo-Dove (Sulawesi Black Pigeon) *Turacoena manadensis* A number of sightings on Sulawesi.

Common Emerald Dove (Asian E D) *Chalcophaps indica*

Stephan's Emerald Dove *Chalcophaps stephani* Single flyby at Tangkoko (*wallacei*).

Zebra Dove (introduced) *Geopelia striata*

Pink-necked Green Pigeon *Treron vernans*

Grey-cheeked Green Pigeon *Treron griseicauda* Scoped at Toraut and Tangkoko (*wallacei*).

Red-eared Fruit Dove *Ptilinopus fischeri* Endemic. Several seen but elusive Lore Lindu & G. Ambang (*centralis*).

Oberholser's Fruit Dove *Ptilinopus epius* Endemic. One was scoped at Molibagu Rd. Heard at Tangkoko.

Scarlet-breasted Fruit Dove *Ptilinopus bernsteinii* Endemic. One of these beauties scoped at Buli Rd (nominate).

Superb Fruit Dove (Western S F D) *Ptilinopus [superbus] temminckii* Endemic. Fleeting on Sulawesi.

Superb Fruit Dove (Eastern S F D) *Ptilinopus [superbus] superbus* A few seen on Halmahera and Bacan.

Blue-capped Fruit Dove *Ptilinopus monacha* N Moluccan endemic. Seen on Halmahera, Ternate and Bacan.

Grey-headed Fruit Dove *Ptilinopus hyogastrus* Endemic. Just a couple seen on Halmahera.

Carunculated Fruit Dove *Ptilinopus granulifrons* Endemic. Seven seen well on Obi.

Black-naped Fruit Dove *Ptilinopus melanospilus* Several on Sulawesi (*melanospilus*) and Obi (*chrysorrhous*).

White-bellied Imperial Pigeon *Ducula forsteni* Endemic. Best seen at Tangkoko.

Grey-headed Imperial Pigeon *Ducula radiata* Endemic. One scoped briefly at Tangkoko.

Green Imperial Pigeon (Paulina's I P) *Ducula [aenea] paulina* Endemic. Not uncommon in Minahasa.

Spectacled Imperial Pigeon *Ducula perspicillata* Not uncommon on Morotai, Halmahera and Obi.

Cinnamon-bellied Imperial Pigeon *Ducula basilica* Endemic. Several sightings on Halmahera.

Cinnamon-bellied Imperial Pigeonà (Obi I P) *Ducula [basilica] obiensis* Endemic. One scoped on Obi. Also heard.

Pied Imperial Pigeon *Ducula bicolor*

Silver-tipped Imperial Pigeon *Ducula luctuosa* Endemic. At least 20 logged in the north of Sulawesi.

Sombre Pigeon *Cryptophaps poecilorrhoea* Heard-only. Endemic. One was out of reach at Gunung Ambang.

Barred Rail *Hypotaenidia torquata* Common on Sulawesi (*celebensis*).

Buff-banded Rail *Hypotaenidia philippensis*

Common Moorhen *Gallinula chloropus*

Black-backed Swamphen *Porphyrio indicus*

Ruddy-breasted Crake *Zapornia fusca* Heard-only. Wanga, Sulawesi.

Red-necked Crake *Rallina tricolor* Heard-only. A non-respondent on Obi.

Isabelline Bush-hen *Amaurornis isabellina* Endemic. Several seen in north Sulawesi, notably at Tangkoko.

Pale-vented Bush-hen *Amaurornis moluccana* Widely heard in the Moluccas, with two seen briefly on Obi.

Tricolored Grebe *Tachybaptus tricolor* A few on Danau Tolire, Ternate, including a recently fledged juvenile.

Red-backed Buttonquail *Turnix maculosus* Difficult now near Palu – one in flight.

Barred Buttonquail *Turnix suscitator* One in the road, en route to Gunung Potong, Sulawesi (*rufilatus*).

Pied Stilt (White-headed S) *Himantopus leucocephalus*

Grey Plover *Pluvialis squatarola*

Pacific Plover *Pluvialis fulva*

Siberian Sand Plover *Anarhynchus mongolus*

Javan Plover *Anarhynchus javanicus* Eight at Makassar Fish Ponds and seven at river mouth near Tangkoko.

Greater Painted-snipe *Rosratula benghalensis* One in ricefields near Palu.

Eurasian Whimbrel *Numenius phaeopus*

Moluccan Woodcock *Scolopax rochussenii* Endemic. Brilliant views this year on Obi. Two seen.

Red-necked Phalarope *Phalaropus lobatus* 100s at sea during the return trip to Obi. Also crossing to Halmahera.

Terek Sandpiper *Xenus cinereus* One at Makassar Fish Ponds.

Common Sandpiper *Actitis hypoleucos*

Grey-tailed Tattler *Tringa brevipes*

Marsh Sandpiper *Tringa stagnatilis*

Wood Sandpiper *Tringa glareola*

Common Redshank *Tringa totanus*

Common Greenshank *Tringa nebularia*

Curlew Sandpiper *Calidris ferruginea* One at Makassar Fish Ponds.

Long-toed Stint *Calidris subminuta*

Red-necked Stint *Calidris ruficollis*

Sanderling *Calidris alba* One at river mouth near Tangkoko.

Bridled Tern *Onychoprion anaethetus*

Little Tern *Sternula albifrons*

Whiskered Tern *Chlidonias hybrida*

White-winged Tern *Chlidonias leucopterus*

Common Tern (Eastern C T) *Sterna [hirundo] longipennis*

Black-naped Tern *Sterna sumatrana* Many recently fledged juveniles were noted at Tangkoko.

Greater Crested Tern *Thalasseus bergii*

Bulwer's Petrel *Bulweria bulwerii* One while crossing from Bisa to Bacan.

Asian Woolly-necked Stork *Ciconia episcopus* A pair near Malino were unexpected.

Lesser Frigatebird *Fregata ariel*

Great Frigatebird *Fregata minor* One during the crossing from Bacan to Bisa.

Brown Booby *Sula leucogaster*

Oriental Darter *Anhinga melanogaster* Two at Tangkoko.

Little Black Cormorant *Phalacrocorax sulcirostris*

Glossy Ibis *Plegadis falcinellus*

Black Bittern *Ixobrychus flavicollis* One on a nest in mangroves near Tangkoko – totally unexpected.

Yellow Bittern *Ixobrychus sinensis* Non-leader.

Black-crowned Night Heron *Nycticorax nycticorax*

Nankeen Night Heron (Rufous N H) *Nycticorax caledonicus* Ten at Makassar Fish Ponds.

Pacific Reef Heron (P R Egret) *Egretta sacra*

Little Egret (Black-footed E) *Egretta [garzetta] nigripes*

Striated Heron *Butorides striata*

Javan Pond Heron *Ardeola speciosa*

Eastern Cattle Egret *Bubulcus coromandus*

Great Egret (Eastern G E) *Ardea [alba] modesta*

Medium Egret *Ardea intermedia*

Purple Heron *Ardea purpurea*

Great-billed Heron *Ardea sumatrana* One along the NE shore of Bisa, during the extension.

Osprey (Eastern O, Australian O) *Pandion [haliaetus] cristatus* One on Bisa.

Barred Honey Buzzard (Sulawesi H B) *Pernis celebensis* Endemic. Great flight views of one at Gunung Lopong.

Pacific Baza *Aviceda subcristata* Three on Halmahera (*rufa*).

Sulawesi Serpent Eagle *Spilornis rufipectus* Endemic. Just a couple of sightings this year.

Sulawesi Hawk-Eagle *Nisaetus lanceolatus* Endemic. Regularly seen, perched and in flight.

Rufous-bellied Eagle *Lophotriorchis kienerii* One at G. Lopong, Sulawesi.

Black Eagle *Ictinaetus malaiensis*

Gurney's Eagle *Aquila gurneyi* Five or six were logged on Halmahera, and another at Danu Tolire, Ternate.

Sulawesi Goshawk *Lophospiza griseiceps* Endemic. Four sightings on Sulawesi.

Spot-tailed Sparrowhawk *Tachypiza trinotatus* Endemic. Several sightings, but rather tricky this time.

Variable Goshawk *Tachypiza hiogaster* Heard-only. A couple on Obi (*obiensis*).

Variable Goshawk (Grey-throated G) *T. [hiogaster] griseogularis* Near-endemic. Several seen: Morotai (*mortyi*) & Halmahera (*griseogularis*).

Vinous-breasted Goshawk *Tachypiza rhodogaster* Endemic. Displaying adult G. Lopong; heard G. Ambang.

Spotted Harrier *Circus assimilis* One at Wanga, and two at Toraut,

Black Kite *Milvus migrans*

Brahminy Kite *Haliastur indus*

White-bellied Sea Eagle *Ichthyophaga leucogaster*

Minahasa Masked Owl *Tyto inexpectata* Heard-only. Endemic. So close along the Anaso Track!

Sulawesi Masked Owl *Tyto rosenbergii* Endemic. Brief but adequate views of just one this year.

Eastern Grass Owl *Tyto longimembris* A single hunting bird showed very nicely at Wanga, near Wuasa, Sulawesi.

Barking Owl *Ninox connivens* Great views of one on Obi (*rufostriata*).

Ochre-bellied Boobook *Ninox ochracea* Endemic. A pair with their fledged young day-roosting at Tangkoko.

Cinnabar Boobook *Ninox ios* Endemic. We eventually got views of one along the Anaso Track, Lore Lindu NP.

Halmahera Boobook *Ninox hypogramma* Endemic. Wouldn't play ball this year on Halmahera. Very frustrating.

Speckled Boobook *Ninox punctulata* Endemic. One seen very well near Wuasa.

Moluccan Scops Owl *Otus magicus* A couple seen on Halmahera (*leucospilus*).

Sulawesi Scops Owl *Otus manadensis* Endemic. Great views of one at Tangkoko. Also heard elsewhere.

Blyth's Hornbill (Papuan H) *Rhyticeros plicatus* Morotai, Halmahera, and Obi (*ruficollis*).

Knobbed Hornbill *Rhyticeros cassidix* Endemic. Frequent on Sulawesi.

Sulawesi Hornbill (S Dwarf H) *Rhabdotorrhinus exarhatus* Endemic. Multiple encounters. Nominate in the north, and *sanfordi* in the south.

Purple-winged Roller *Coracias temminckii* Endemic. Several seen well at Tangkoko.

Azure Dollarbird (Purple D) *Eurystomus azureus* Endemic. A pair appeared at the last minute, along the Buli Rd.

Green-backed Kingfisher *Actenoides monachus* Endemic. Six logged at Tangkoko. Typically tame.

Green-backed Kingfisher (Black-headed K) *A. [monachus] capucinus* Endemic. A tame stunner at Karaenta.

Scaly-breasted Kingfisher (Lore Lindu K) *Actenoides [princeps] regalis* Endemic. A pair, as dawn broke, along the Anaso Track.

Scaly-breasted Kingfisher (Regal K) *Actenoides [princeps] regalis* Endemic. A superb tame male at G. Mahawu.

Common Paradise Kingfisher *Tanysiptera galatea* Four different subspecies seen well this year: *doris* (Morotai), *browni* (Halmahera), *margarethae* (Bacan), and *obiensis* (Obi).

Sulawesi Lilac Kingfisher (L-cheeked K) *Cittura cyanotis* Endemic. Singles at Tambun and Toraut.

Great-billed Kingfisher *Pelargopsis melanorhyncha* Two near Tangkoko and two at Luley Resort (nominate).

Ruddy Kingfisher *Halcyon coromanda* One scoped at Tangkoko (*rufa*).

Blue-and-white Kingfisher *Todiramphus diops* North Moluccan endemic. Almost 30 in total on Halmahera, Ternate, Obi, & Bacan.

Sombre Kingfisher *Todiramphus funebris* Endemic. One tracked down on Halmahera. Others heard.

Collared Kingfisher *Todiramphus chloris*

Beach Kingfisher *Todiramphus saurophagus* One on Halmahera, three on Bisa, and one on Obi (nominate).

Sacred Kingfisher *Todiramphus sanctus* One on Obi.

Common Kingfisher (Hispid K) *Alcedo [atthis] hispidoides* Scattered sightings: Sulawesi, Bisa, Obi.

Sulawesi Dwarf Kingfisher *Ceyx fallax* Endemic. One was skilfully located by our guides at Tangkoko.

Moluccan Dwarf Kingfisher (Halmahera D K) *Ceyx [lepidus] uropygialis* North Moluccan endemic. Singles seen superbly well on Halmahera & Obi.

Purple-bearded Bee-eater *Meropogon forsteni* Endemic. A lovely pair along the Anaso Track.

Blue-tailed Bee-eater *Merops philippinus* Locally common Sulawesi (*celebensis*).

Sulawesi Pygmy Woodpecker *Yungipicus temminckii* Endemic. Occasional.

Ashy Woodpecker *Mulleripicus fulvus* Endemic. Some great sightings: nominate (north); *wallacei* (south).

Spotted Kestrel (Indonesian K) *Falco moluccensis*

Oriental Hobby *Falco severus* Several noted on Morotai, Halmahera, & Obi (*papuanus*).

Peregrine Falcon (Australasian Peregrine) *Falco [peregrinus] ernesti* One along Molibagu Rd, Sulawesi.

White Cockatoo *Cacatua alba* North Moluccan endemic. Halmahera, Ternate, Obi (introduced), and Bacan.

Moluccan King Parrot *Alisterus amboinensis*. Just four at Buli Rd, Halmahera, but pretty good views.

Gold-mantled Racket-tail (Sulawesi Racquet-t) *Prioniturus platurus* Endemic. 70 logged on Sulawesi (nominate).

Yellow-breasted Racket-tail (Minahasa Racquet-t) *P. flavicans* Endemic. Just a few in north Sulawesi.

Moluccan Eclectus *Eclectus roratus* Morotai, Halmahera, Obi, & Bacan (*vosmaeri*). About 20 in all.

Red-cheeked Parrot *Geoffroyus geoffroyi* Morotai, Halmahera, and Bacan (*cyanicollis*); Obi (*obiensis*).

Great-billed Parrot *Tanygnathus megalorhynchus* Just two on Halmahera, and one on Obi (nominate).

Azure-rumped Parrot (Blue-backed P) *Tanygnathus sumatranus* Good numbers in north Sulawesi (nominate).

Red-flanked Lorikeet *Charmosyna placensis* Found on Morotai, Halmahera, Obi & Bacan (*intensor*).

Chattering Lory *Lorius garrulus* North Moluccan endemic. Morotai (*morotaianus*; heard), Halmahera (*garrulus*), & Obi (*flavopalliatus*).

Yellow-cheeked Lorikeet *Trichoglossus [flavoviridis] meyeri* Endemic. Seen well at Lore Lindu.

Ornate Lorikeet *Saudareos ornata* Endemic. Small numbers, scattered locations. Best at Lake Taming, L. Lindu.

Violet-necked Lory *Eos squamata* 2 Morotai, 38 Halmahera, 4 Bacan (*riciniata*); 1 Obi (*obiensis*).

Great Hanging Parrot (Sulawesi H P, Large S H P) *Loriculus stigmatus* Common in Sulawesi.

Moluccan Hanging Parrot *Loriculus amabilis* North Moluccan endemic. Seven seen, but not common.

Pygmy Hanging Parrot (Small Sulawesi H P) *Loriculus exilis* Endemic. Elusive. 5 at Molibagu Rd, 1 at Tangkoko.

Sulawesi Pitta (Sahul P, Sulawesi Sahul P) *Erythropitta celebensis* Endemic. A beauty at Gunung Mahawu.

North Moluccan Pitta (Sultan's S P, Sahul P, Papuan Sahul P) *Erythropitta rufiventris* North Moluccan endemic. One seen very well on Halmahera and two seen on Bacan (nominate), and commonly heard on Obi (*obiensis*).

Ivory-breasted Pitta *Pitta maxima* Endemic. Excellent views of one on Halmahera; others heard.

Ivory-breasted Pitta (Morotai P) *Pitta [maxima]morotaiensis* Endemic. Eight heard, but the briefest glimpses.

Dark-eared Myza (Lesser M) *Myza celebensis* Endemic. 3 Lompobattang (*meridionalis*), 7 Lore Lindu (nominate).

White-eared Myza (Greater M) *M. sarasinorum* Endemic. Seven were found at the higher levels of Anaso Track.

White-streaked Friarbird (Halmahera F) *Melitograis gilolensis* Endemic. Four on Halmahera.

Moluccan Myzomela (Sultan's M) *Myzomela simplex* Endemic. Seven on Halmahera (nominate).

Red-tinged Myzomela *Myzomela rubrotincta* Endemic to Obi & Bisa. Three seen well on Obi.

Sulawesi Myzomela *Myzomela chloroptera* Endemic. Five Lompobattang (*juga*), & nine Lore Lindu (nominate).

Morotai Friarbird (Dusky F) *Philemon fuscicapillus* Endemic. Common enough on Morotai (8 logged).

Golden-bellied Gerygone (Sulawesi G, Flyeater) *Gerygone [sulphurea] flaveola* Common Sulawesi.

White-breasted Woodswallow *Artamus leucorhynchus* Widespread: *albiventer* Sulawesi, *leucopygialis* Moluccas.

Ivory-backed Woodswallow *Artamus monachus* Endemic. 18 logged on Sulawesi.

Cerulean Cuckooshrike *Coracina temminckii* Endemic. A nice pair at Gunung Lopong.

Pied Cuckooshrike *Coracina bicolor* Endemic. Four from the viewpoint at Tangkoko.

White-rumped Cuckooshrike *Coracina leucopygia* Endemic. Three seen in north Sulawesi.

White-bellied Cuckooshrike (Papuan C) *Coracina papuensis* 1 Morotai, 2 Halmahera, 2 Bisa, 2 Obi (nominate).

Moluccan Cuckooshrike *Coracina atriceps* Five seen well at Gunung Ronny, Halmahera (*magnirostris*).

Halmahera Cuckooshrike *Coracina parvula* Endemic. Three on Halmahera.

Pale Cicadabird *Edolisoma ceramense* Four seen on Obi (*hoogerwerfi*).

Sulawesi Cicadabird *Edolisoma morio* Endemic. 1 Lompobattang (*edithae*); 6 in C & N Sulawesi (nominate).

Obi Cicadabird *Edolisoma obiense* Endemic. Four seen well on Obi.

North Moluccan Cicadabird *Edolisoma grayi* Endemic. Just three on Halmahera, but seen well (nominate).

Pygmy Cuckooshrike (Mountain Cicadabird) *Celebesica abbotti* Endemic. 1 Lompobattang, 3 Lore Lindu.

White-shouldered Triller *Lalage sueurii* Three on Sulawesi.

Rufous-bellied Triller *Lalage aurea* North Moluccan endemic. Seen on Halmahera, Obi & Bacan.

White-rumped Triller (Sulawesi T) *Lalage leucopygialis* Endemic. Four on Sulawesi.

Maroon-backed Whistler *Coracornis raveni* Endemic. Three seen along the Anaso Track.

Sulphur-vented Whistler (S-bellied W) *Pachycephala sulfuriventer* Endemic. Common in montane Sulawesi.

Black-chinned Whistler (Halmahera W) *Pachycephala [mentalis] mentalis* 9 logged on Halmahera.

Drab Whistler *Pachycephala griseonota* One Halmahera; six heard Bacan (*cinerascens*); differing vocally on each island.

Dusky-brown Oriole (Halmahera O) *Oriolus phaeochromus* Endemic. Easily seen well this year, with 7 logged.

Black-naped Oriole (Sulawesi Golden O) *Oriolus [chinensis] frontalis* Endemic. Widespread on Sulawesi.

Sulawesi Drongo (S Spangled D) *Dicrurus montanus* Endemic. 12 recorded in upland areas of Sulawesi.

Spangled Drongo (Bacan S D) *Dicrurus [bracteatus] ssp.nov.* Endemic. 10 noted.

Spangled Drongo (Morotai S D) *Dicrurus [bracteatus] morotensis* Endemic. Just three on Morotai.

Spangled Drongo (Halmahera S D) *Dicrurus [bracteatus] atrocaeruleus* Endemic. 13 seen on Halmahera.

Hair-crested Drongo (White-eyed Spangled D) *Dicrurus [hottentottus] leucops* Endemic. Common on Sulawesi.

Hair-crested Drongo (Obi Spangled D) *Dicrurus [hottentottus] guillemardi* Endemic. Ten Obi, with one on nest.

Willie Wagtail (W Wagtail) *Rhipidura leucophrys* Common all over the Moluccas (*melaleuca*).

Northern Fantail (Obi F) *Rhipidura [rufiventris] obiensis* Endemic. Common on Obi. Nest with 2 eggs.

Sulawesi Fantail (Rusty-bellied F) *Rhipidura teysmanni* Endemic. Nine Lompobattang (nominate), ten Lore Lindu NP (*toradja*), four Gunung Ambang (*coomansi*).

Pale-blue Monarch *Hypothymis puella* Endemic. Regularly encountered on Sulawesi (nominate).

Moluccan Monarch (Halmahera M) *Symposiachrus [b.] bimaculatus* Endemic. Handful on Halmahera & Bacan.

Moluccan Monarch (Obi M) *Symposiachrus [bimaculatus] diadematus* Endemic. Three on Obi.

White-naped Monarch (Halmahera Pied M) *Carterornis [pileatus] pileatus* Endemic. 1 seen, 1 heard Halmahera.

Moluccan Flycatcher (M Monarch, Slaty F) *Myiagra galeata* Endemic. A few on Halmahera and Obi (nominate).

Shining Flycatcher (Moluccan S Monarch, Shining M) *M. alecto* Morotai, Halmahera, Ternate, Obi, Bacan (nom.).

Piping Crow *Corvus typicus* Endemic. Four at Gunung Lopong, Lore Lindu NP. Tough to find these days.

Sulawesi Crow *Corvus celebensis* Endemic. Common on Sulawesi.

Long-billed Crow *Corvus validus* This well-endowed corvid was common enough on Morotai, Halmahera & Bacan.

Torresian Crow (Australian C) *Corvus orru* Two on Obi (nominate).

Halmahera Paradise-crow (Morotai P-c) *Lycocorax [pyrrhopterus] morotensis* Endemic. A handful on Morotai.

Halmahera Paradise-crow *Lycocorax pyrrhopterus* Endemic. Just ten logged this year.

Obi Paradise-crow *Lycocorax obiensis* Endemic. Common, conspicuous and highly distinctive vocally.

Standardwing (Wallace's S) *Semioptera wallacii* Endemic. A great show at the Foli lek (5). Also at Buli Rd (2).

Hylocitrea (Northern H) *Hylocitrea [bonensis] bonensis* Endemic. Best year ever, up the Anaso Track. 12+ seen.

Hylocitrea (Southern H) *H. [b.] bonthaina* Endemic. Awesome to see a male of this very distinct form near Malino.

Citrine Canary-Flycatcher *Culicicapa chloris*

Halmahera Golden Bulbul *Hypsipetes lucasi* Endemic. Common Morotai, Halmahera & Bacan.

Obi Golden Bulbul *Hypsipetes chloris* Endemic. Ditto on Obi.

Yellow-vented Bulbul (introduced) *Pycnonotus goiavier*

Sooty-headed Bulbul (introduced) *Pycnonotus aurigaster*

Pacific Swallow *Hirundo tahitica*

Barn Swallow *Hirundo rustica*

Mountain Tailorbird *Phyllergates cuculatus* Lompobattang (*hedymeles*), Lore Lindu (*stentor*), Ambang (*riedeil*).

Arctic Warbler *Phylloscopus borealis* A few on Obi & Bacan.

Sulawesi Leaf Warbler *Phylloscopus nesophilus* Endemic. Common Lore Lindu, and heard Gunung Ambang.

Lompobattang Leaf Warbler *Phylloscopus sarasinorum* Endemic. 30 estimated at Lompobattang.

Island Leaf Warbler (Halmahera L W, North Moluccan L W) *Phylloscopus [poliocephalus] henrietta* Endemic. One seen well and another heard along the upper Buli Rd.

Australian Reed Warbler (Australasian R W) *Acrocephalus australis* Makassar Fish Ponds and Wanga.

Gray's Grasshopper Warbler *Locustella fasciolata* Morotai, Halmahera, Obi, and Bacan. Bit of a skulker.

Sulawesi Bush Warbler (S Grasshopper W, Chestnut-backed B W) *Locustella castanea* Endemic. Frequent in uplands.

Malia *Malia grata* Endemic. Lompobattang (nominate), Lore Lindu (*stresemanni*), & Gunung Ambang (*recondita*).

Tawny Grassbird *Cincloramphus timoriensis* Heard-only. Wanga, central Sulawesi.

Zitting Cisticola (Double Zitting C) *Cisticola [juncidis] tinnabulans* Sulawesi (*constans*).

Golden-headed Cisticola *Cisticola exilis* Heard-only. En route to Gunung Potong. (*rusticus*).

Plain Prinia *Prinia inornata* Small numbers near Palu. New for Sulawesi a few years ago, but likely introduced.

Streak-headed White-eye *Lophozosterops squamiceps* Endemic. SW (*squamiceps*) & NC (*striaticeps*) Sulawesi.

Warbling White-eye *Zosterops japonicus* Fairly common in Sulawesi montane forests (*montanus*).

Lemon-bellied White-eye *LonchuraZosterops chloris* Widespread on Sulawesi (*mentoris*).

Black-crowned White-eye (B-fronted W-e) *Z. atrifrons* Endemic. Common Sulawesi; NC (*surdus*) & N (nominate).

Black-ringed White-eye *Zosterops anomalus* Endemic. Seen well near Malino, and heard at Karaenta Forest.

Morotai White-eye *Zosterops dehaanii* Endemic. A pair seen well and others heard.

Cream-throated White-eye (Obi W-e) *Z. [atriceps] sp. nov.* Endemic. 2 pairs Obi. Wrongly placed in Bacan by IOC.

Cream-throated White-eye (Halmahera W-e) *Zosterops [atriceps] fuscifrons* Endemic. 20+ on Halmahera.

Cream-throated White-eye (Bacan W-e) *Z. [a.] atriceps* Endemic. Common enough on Bacan, with 10 logged.

Sulawesi Babbler *Trichastoma celebense* Endemic. Subspecies *rufofuscum* in NC, and nominate in N.

Metallic Starling *Aplonis metallica* Common and widespread in the Moluccas (nominate).

Moluccan Starling *Aplonis mysolensis* Quite a few on Halmahera, Obi, and Bacan.

Short-tailed Starling *Aplonis minor* Just one near Malino (nominate).

Sulawesi Myna (S Crested M, Short-crested M) *Basilornis celebensis* Endemic. Nine logged around Tangkoko.

White-necked Myna (Northern W-n M) *Streptocitta [albicollis] torquata* Endemic. 15 seen in N Sulawesi.

Fiery-browed Starling (Flame-b Myna) *Enodes erythrophris* Endemic. NC (*centralis*) & N (*erythrophris*) Sulawesi.

Grosbeak Starling (Finch-billed Myna) *Scissirostrum dubium* Endemic. Widespread in Sulawesi this year.

Javan Myna (introduced) *Acridotheres javanicus*

Geomalia *Zoothera heinrichi* Endemic. An unbelievably tame juvenile at Lake Taming, Lore Lindu NP.

Red-backed Thrush *Geokichla erythronota* Endemic. A couple of beauties at Tangkoko NP (nominate).

Sulawesi Thrush *Turdus turdoides* Endemic. 2 Lompobattang (nom.), and a showy male Anaso Track (*abditiva*).

Grey-streaked Flycatcher *Muscicapa griseisticta*

Turquoise Flycatcher (Wallacean Warbling-f) *Eumyias [panayensis] septentrionalis* Montane Sulawesi.

Matinan Blue Flycatcher (M Warbling-f) *E. sanfordi* Endemic. A tame individual obliged at Gunung Ambang.

Blue-fronted Blue Flycatcher (Hoevell's Warbling-f) *Eumyias hoevelli* Endemic. Four at Lore Lindu.

Sulawesi Blue Flycatcher (S Jungle-f) *Cyornis omissus* Endemic. A male scoped at Gunung Lopong.

Great Shortwing (Latimojong Heinrichia, Heinrichia) *Heinrichia calligyna* Endemic. Male seen well Lore Lindu.

Snowy-browed Flycatcher *Ficedula hyperythra* A few at Lore Lindu & G. Ambang (*jugosae*), & Mahawu (*annalisa*).

Little Pied Flycatcher *Ficedula westermanni* Six at Lompobattang (*hasselti*), and three Lore Lindu NP (nominate).

Lompobattang Flycatcher *Ficedula bonthaina* Endemic. Two seen and 2 heard Malino/Lompobattang.

Blue Rock Thrush (Asian R T, Oriental R T) *Monticola [solitarius] philippensis* Singles on Ternate and Obi.

Pied Bush Chat *Saxicola caprata* Sulawesi (*albonotatus*).

Yellow-sided Flowerpecker *Dicaeum aureolimbatum* Endemic. Regularly encountered on Sulawesi (nominate).

Crimson-crowned Flowerpecker *Dicaeum nehrkorni* Endemic. Five at Lore Lindu NP, a good year.

Halmahera Flowerpecker *Dicaeum schistaceiceps* North Moluccan endemic. Small numbers Halmahera & Obi.

Grey-sided Flowerpecker *Dicaeum celebicum* Endemic. Common and widespread on Sulawesi (nominate).

Brown-throated Sunbird *Anthreptes malacensis* Frequent on Sulawesi (*celebensis*).

Black Sunbird *Leptocoma aspasia* Subsp. *porphyrolaema* C & SW Sulawesi, *grayi* N Sulawesi, *auriceps* Moluccas.

Sahul Sunbird *Cinnyris frenatus* Common: *plateni* Sulawesi, *frenatus* Moluccas.

Crimson Sunbird (Sulawesi C S) *Aethopyga [siparaja] flavostriata* Endemic. 2 males Molibagu Rd (*flavostriata*).

Eurasian Tree Sparrow (introduced) *Passer montanus*

Java Sparrow (introduced) *Padda oryzivora* Craig saw one at Ternate airport. Last bird of the trip!

Scaly-breasted Munia *Lonchura punctulata* A dozen *particeps* in Sulawesi.

Black-faced Munia *Lonchura molucca* Scattered throughout (nominate).

Chestnut Munia *Lonchura atricapilla* Common Sulawesi (*brunneiceps*); 1 Buli Rd, Halmahera (introduced).

Pale-headed Munia *Lonchura pallida* 200 near Palu.

Eastern Yellow Wagtail (Alaskan W) *M. [tschutschensis] tschutschensis* Sulawesi and Obi.

Grey Wagtail *Motacilla cinerea* Sulawesi and Obi.

Indonesian Serin (Mountain S) *Chrysocorythus estherae* Small numbers high up on Anaso track, but elusive.

MAMMALS

Sulawesi Bear Cuscus *Ailurops ursinus* Endemic. Two were found for us by our guides at Tangkoko NP.

Obi Cuscus *Phalanger rothschildi* Endemic. One spotlighted on Obi.

Small Sulawesi Cuscus *Phalanger celebensis* Endemic. One spotlighted at Tangkoko.

Malay Civet (introduced) *Viverra zibetha* Non-leader. One at Lake Taming, Lore Lindu NP.

Risso's Dolphin *Grampus griseus* Around 20 between Bacan and Bisa.

Spinner Dolphin *Stenella longirostris* >40 between Bacan and Bisa's NE shore.

Halmahera Naked-backed Fruit Bat *Dobsonia crenulata* A few were massing in a Nutmeg grove on Obi.

South Moluccan Flying Fox *Pteropus chrysoproctus* Seen flying over at dusk, in numbers, on Obi.

Gursky's Tarsier *Tarsius spectrumgurskyae* Endemic. Two seen at Tangkoko and heard at Tambun; superb.

Moor Macaque *Macaca maura* Endemic. 12 at Lompobattang and 10 at Karaenta Forest.

Crested Macaque *Macaca nigra* Endemic. Abundant this year at Tangkoko, with probably over 70 noted.

Whitish Dwarf Squirrel (Pale D S) *Prosciurillus leucomus* Endemic. Two at Tangkoko, with the white neck patches.

Celebes Dwarf Squirrel (Northern D S) *Prosciurillus murinus* Endemic. Widespread in C and N Sulawesi.

Pacific Rat (Polynesian R) *Rattus exulans* Native. Several hunting Moluccan Megapode eggs at Galela, Halmahera.

Brown Rat (Norway R) (introduced) *Rattus norvegicus* Non-leader.

REPTILES

Green Crested Lizard *Bronchocela cristatella* Halmahera and Bacan.

Walker's Gliding Dragon *Draco walkeri* Karaenta Forest, Sulawesi.

Flat-tailed House Gecko *Hemidactylus platyurus*

Water Monitor *Varanus salvator* N Sulawesi (*celebensis*).

Terrific Bronzeback *Dendrelaphis terrificus* Tangkoko.

AMPHIBIANS

Asian Common Toad (introduced) *Duttaphrynus melanostictus* Widely recorded.

BETLES

Tiger Beetle *Therates coracinus* Obi.

BUTTERFLIES

Wallace's Golden Birdwing *Ornithoptera croesus lydius* A couple of females on Halmahera.

Halmahera Birdwing *Troides criton*

Common Birdwing *Troides helena hephaestus* Sulawesi.

Sulawesi Rose *Pachliopta polyphontes* Morotai.

Ascalaphus Swallowtail (Sulawesi Blue Mormon) *Papilio ascalaphus* Tambun, Sulawesi.
Sulawesi Banded Swallowtail *Papilio gigon* Molibagu Road, Sulawesi.
Great Jay (Pale Triangle) *Graphium eurypylus* Tambun, Sulawesi.
Milon's Bluebottle *Graphium milon* Tambun.
Rhesus Swordtail *Graphium rhesus* Tambun.
Common Albatross *Appias albina* Tambun.
Orange Albatross *Appias zarinda zarinda* Tambun.
Lemon Migrant *Catopsila pomona* Halmahera.
Jezebel *Delias chrysmelaena prodigialis* Buli Rd, Halmahera. First photos of living specimen.
Great Orange Tip *Hebomoia glaucippe celebensis* Toraut, Buli Road etc.
Common Grass Yellow (Large G Y) *Terias hecabe* Malino.
Pale Ciliate Blue *Anthene lycaenoides* Halmahera.
Ancyra Blue *Catopyrops ancyra* Obi.
Orange-tipped Peablu *Everes lacturnus* Bacan.
Metallic Cerulean *Jamides alecto* Bacan.
Dark Cerulean *Jamides bochus* Malino Uplands.
Forest Quaker *Pithecops corvus* Gunung Ambang.
Pied Blue *Pithecops dionisius* Morotai.
Blue *Psychonotis eudocia* Halmahera and Bacan.
Pale Ringlet *Acroptalmia artemis* Morotai.
Palm King *Amathusia phidippus* Tambun, Sulawesi.
'Sulawesi Sargeant' *Athyma libnites* Malino Uplands.
Common Tiger (Striped T) *Danaus genutia* Widespread.
Ismare Tiger *Danaus ismare* Halmahera.
Eastern Red Lacewing *Cethosia cydippe* Halmahera, Obi.
Violet Lacewing *Cethosia myrina* Lore Lindu.
Godart's Map *Cyrestis acilia* Bacan.
Palmfly *Elymnias cybele* Halmahera, Bacan.
Sulawesi Faun (Menado F) *Faunis menado* Gunung Ambang.
Sulawesi Sorcerer *Hestinalis divona* G. Lapong, Sulawesi.
Blanchard's Tree Nymph (B Ghost) *Idea blanchardii* Tangkoko.
Grey Glassy Tiger *Ideopsis juvena* Halmahera, Obi.
Blanchard's Wood Nymph *Ideopsis vitrea* G. Lapong, Sulawesi (*oenopia*), & Obi (*obiana*).
Brown Pansy *Junonia hedonia* Halmahera.
Sulawesi Chocolate Pansy *Junonia intermedia* Tangkoko and Bacan.
Meadow Argus *Junonia vilida* Morotai.
'Sulawesi Commander' *Lamasia lycides* G. Lapong, Sulawesi.
Archduke *Lexias aetes* Lore Lindu & Tangkoko.

White-spotted Beak *Libythea narina* G. Lapong, Sulawesi
Common Evening Brown *Melanitis leda* Bacan.
Evening brown *Melanitis velutina* Gunung Ambang.
Bushbrown *Mycalesis messene* Morotai.
Orange Bushbrown *Mycalesis terminus* Morotai, Halmahera, Bacan.
Sulawesi Bushbrown *Lohora ophthalmica* Tambun, Sulawesi.
Cape York Aeroplane *Pantoporia venilia* Halmahera.
Daria Sailer *Phaedyra daria* Tangkoko.
Sacred Tabby *Pseudergolis avesta* Gunung Ambang.
Janardana Bushbrown (Common B) *Telinga janardana* Bacan.
Ring *Ypthima gavalisi* Lore Lindu.
Ring *Ypthima loryma* Tangkoko.
Philippine Five-ring *Ypthima stelleri* Halmahera.
Tailed Emperor *Polyura pyrrhus* Obi.
Australian Lurcher *Yoma sabina* Bacan.
Blue-banded Eggfly *Hypolimnas alimena* Morotai, Bacan.
Malayan Eggfly *Hypolimnas anomala* Obi.
Great Eggfly *Hypolimnas bolina* Obi and Bacan.
Owl *Taenaris macrops* Halmahera.
'Wallacean' Assyrian *Terinos taxiles* Halmahera.
Pied Flat (Common Snow F) *Tagiades jepetus* Halmahera, Obi, Bacan.

MOTHS

Sulawesi Moon Moth *Actias isis* Lake Tambing, Lore Lindu.
Agathia lycaenaria Lake Tambing.
Sulawesi Atlas Moth *Attacus erebus* Lake Tambing.
Silkmoth *Antheraea celebensis* Lake Tambing.
Silkmoth *Antheraea paukstatorum* Lake Tambing.
Arcte modesta Lake Tambing.
Bracca adelindae Lake Tambing.
Bracca olafhenkeli Lake Tambing.
Callidula propinqua Bacan.
Callidula sp. Gunung Ambang.
Cricula Silkmoth *Cricula trifenestrata* Molibagu Road.
Daddala lucilla Lake Tambing.
Zhejiang Tussock Moth *Dasychira chekiangensis* Lake Tambing.
Milionia delicatula Lore Lindu.
Monosyntaxis sulawesiensis Lake Tambing.

Loepa minahassae Lore Lindu and Molibagu Rd (caterpillar).

Ommatophora luminosa Lake Tambing.

Ophthalmis lincia Obi.

Ophthalmis milete Tambun.

Plutodes flavescens Lake Tambing.

Ruttellerona pseudocessaria Lake Tambing.

DRAGONFLIES

Jewel ***Rhinocypha frontalis*** Molibagu Road, Sulawesi.

Papuan Jewel ***Rhinocypha tincta*** Morotai and Halmahera.

Variable Wisp ***Agrioncnemis femina*** Obi.

Pale-spotted Emperor ***Anax guttatus*** Anaso Track.

Red Swamp Dragon ***Agrionoptera insignis*** Morotai.

Striped Swampdragon ***Agrionoptera longitudinalis*** Morotai and Obi.

Grenadier ***Agrionoptera similis*** Obi and Bacan.

Skimmer ***Diplacina militaris*** Molibagu Road.

Skimmer ***Diplacina phoebe*** Morotai, Halmahera, Obi, Bacan.

Skimmer ***Lyriothemis eurydice*** Anaso Track.

Scarlet Pygmy (Northern Pymyfly) ***Nannophya pygmaea*** Bacan.

Percher ***Neurothemis manadensis*** Sulawesi, Bacan.

Red Percher ***Neurothemis ramburii*** Morotai, Halmahera & Bacan.

Crimson-tailed Marsh Hawk ***Orthetrum pruinosum*** Tangkoko.

Green Skimmer ***Orthetrum serapia*** Morotai, Halmahera, Obi & Bacan.

SPIDERS

Giant Golden Orbweaver ***Nephila pilipes*** Obi.

PLANTS

Fungus Root ***Balanophora papuana*** Gunung Ambang.

Great Pitcher-plant ***Nepenthes maxima*** All the plants photographed at Lore Lindu were this species.

Chinese Crown Orchid ***Eulophia graminea*** Morotai.

Tall Shield Orchid ***Nervilia concolor*** Halmahera.

Orchid ***Peristylus monticola*** Anaso Track.



Tangkoko Viewpoint (image by Craig Robson)



Sulawesi (Sultan's) Cuckoo-Dove (image by Craig Robson)



Jonas & the drivers (image by Craig Robson)



Cobalt-eared (Common) Kingfisher (image by Craig Robson)



Speckled Boobook (image by Andrew Wilson)



Morotai White-eye (image by Andrew Wilson)



Ivory-breasted Pitta (image by Andrew Wilson)



Dusky Brown Oriole (image by Andrew Wilson)



Moluccan Megapode (image by Andrew Wilson)



Red-backed Thrush (image by Andrew Wilson)



Birding at Tangkoko (image by Craig Robson)



Halmahera White-eye (image by Craig Robson)



Moluccan Woodcock (image by Craig Robson)



Sulawesi Pitta (image by Craig Robson)



juvenile Maleo (image by Craig Robson)



Geomalia (image by Craig Robson)



Birding at Buli Road (image by Craig Robson)



Piping Crow (image by Andrew Wilson)



Lompobattang Flycatcher (image by Andrew Wilson)



Sulawesi Scops Owl (image by Craig Robson)



Pygmy Cuckooshrike (image by Craig Robson)



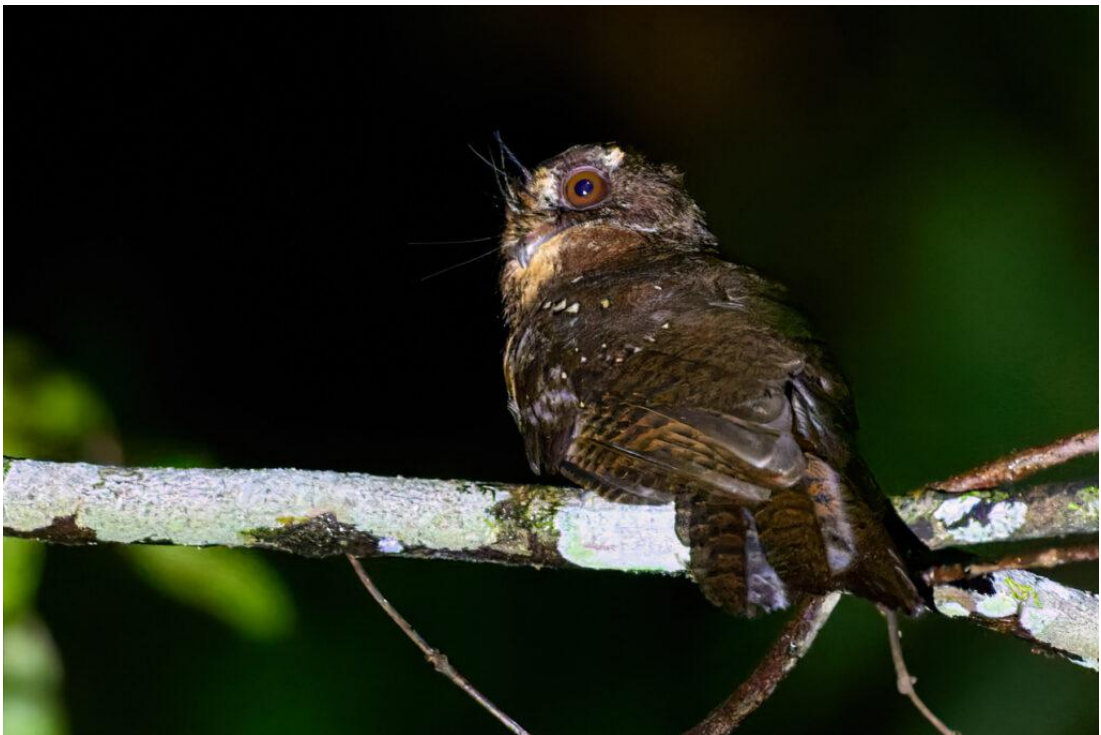
Halmahera White-eye (image by Craig Robson)



Blue-and-white Kingfisher (image by Craig Robson)



Southern Hylocitrea (image by Andrew Wilson)



Moluccan Owlet-nightjar (image by Andrew Wilson)



Great-billed Kingfisher (image by Andrew Wilson)



Black-chinned Whistler (image by Andrew Wilson)



Maleo (image by Andrew Wilson)



Purple-bearded Bee-eater (image by Andrew Wilson)



Birding at Foli (image by Craig Robson)



Geomalialia (image by Craig Robson)



Moluccan Dwarf Kingfisher (image by Craig Robson)



Sulawesi Atlas Moth (image by Craig Robson)



Field lunch at Anaso Track (image by Craig Robson)



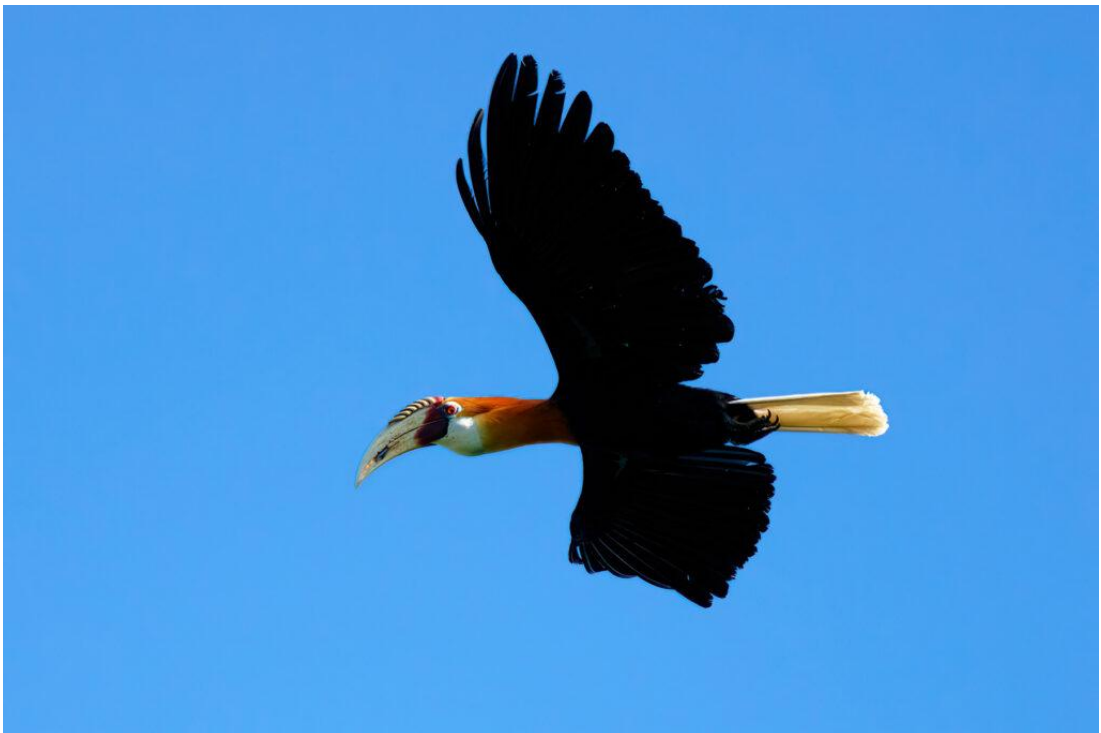
Sulawesi Myna (image by Craig Robson)



Oberholser's Fruit Dove (image by Andrew Wilson)



Lake Taming (image by Craig Robson)



Knobbed Hornbill (image by Andrew Wilson)



North Moluccan Pitta (image by Andrew Wilson)



Standardwing (image by Andrew Wilson)



Dusk on Halmahera (image by Craig Robson)